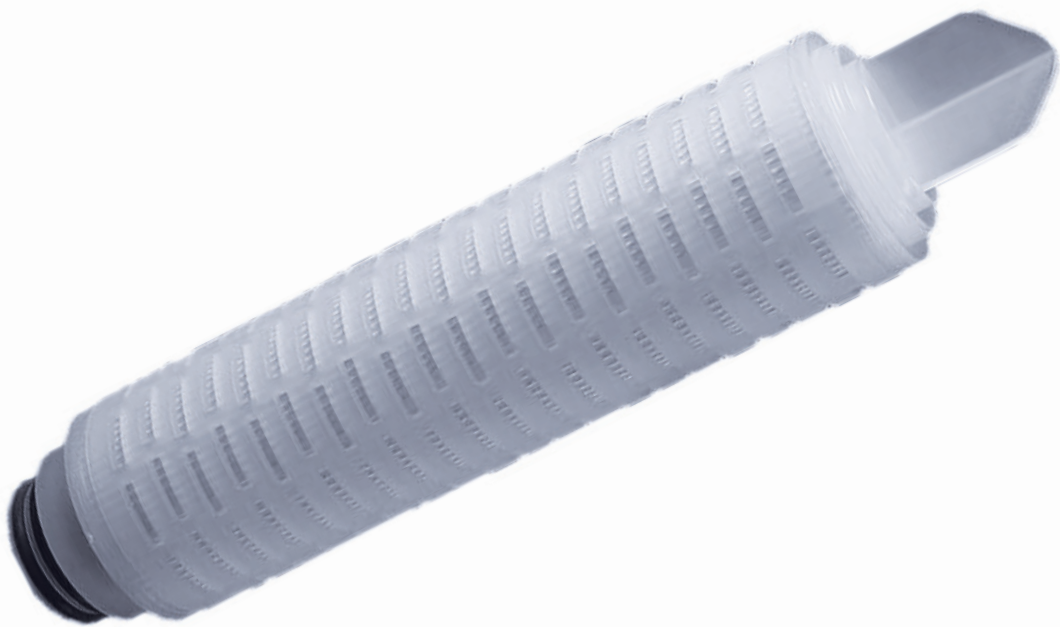


Hall Pyke



Surface Pre Filtration

GlassFlow

The SMART choice for filtration

GlassFlow® Filter Cartridges

Glass Fiber · Pre-filter for Liquids

GlassFlow® Filter Cartridges are composed of super-fine glass microfiber media and polypropylene layers. This combination provides the filter with an inherently absorptive characteristic that enhances filter retention capability. Characteristics include high dirt holding capacity and excellent particle removal resulting in additional protection for sterilizing-grade filters. These filters are ideally suited in the filtration of liquids containing gels, lipids, and proteins.

Features and Benefits

- High dirt holding capacity and longer service life
- High flow rates with low pressure drops
- Glass Fiber media ensures high flow rates and excellent filtration efficiency

Quality Standards

- Designed, developed and manufactured in compliance with ISO9001
- Full Regulatory Compliance with the following:
 - 21CFR.210.3(b)(5)(6), 211.72 for Non-Fiber Release
 - Endotoxins: <0.25EU/ml/10inch filter
 - USP <88> Plastic Class VI-121 °C
 - FDA 21 CFR177-182 & EU 1935/2004/EC

Typical Applications

- Blood Products
- High Viscosity Liquids
- Serums

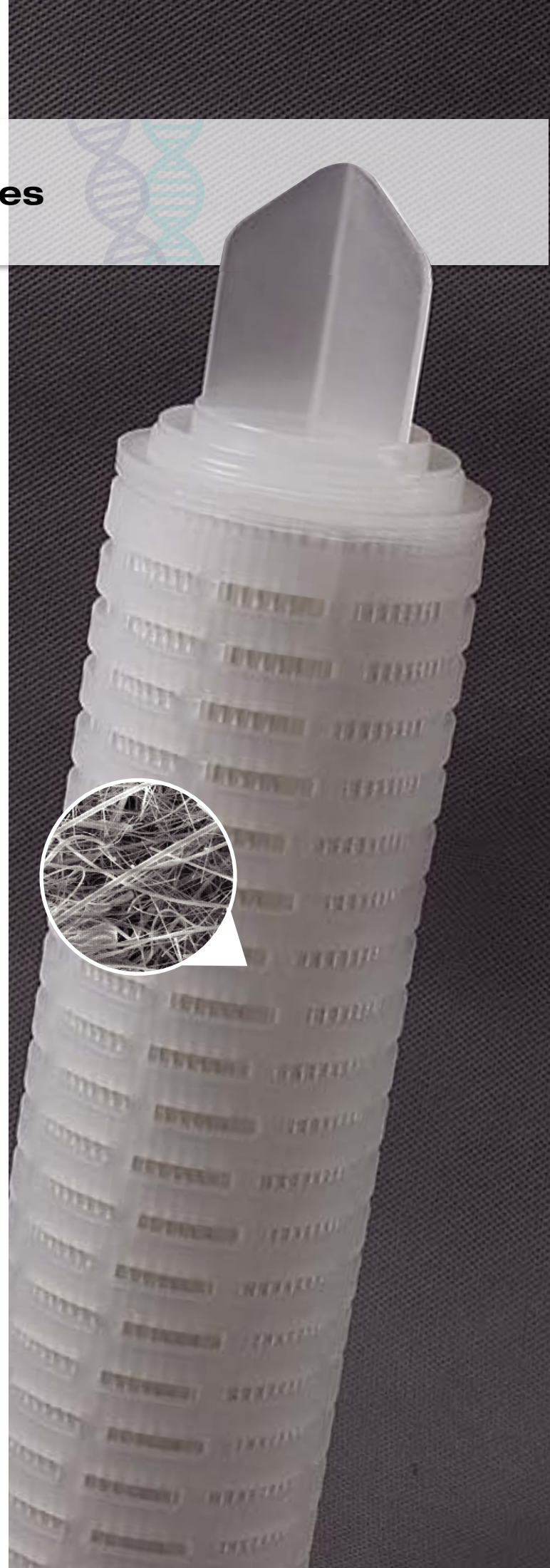
Sterile Filtration

Bio-burden Reduction

Pre-Filtration

All-Fluorine Filters

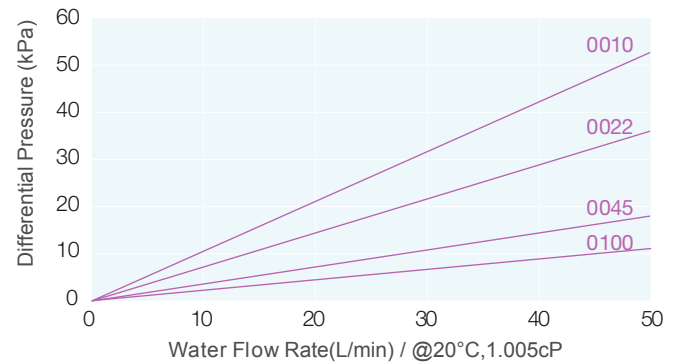
Capsule Filters



Materials of Construction

Filter Media	GlassMicrofiber
Support	Polypropylene
Core/Cage/End Caps	Polypropylene

Flow Rate Characteristics



Operating Conditions

Max. Temperature	80°C
Max. Differential Pressure	4.0 bar / 21°C 2.4 bar / 80°C
Effective Filtration Area	0.26-0.29m ² / Ø 69-10 inch

Sterilization

Inline Steam Sterilization	up to 30 cycles (135°C for 30min@30kPa per cycle)
-----------------------------------	---

Ordering Information

LGFP	Removal Ratings	End Cap	Nominal Length	Seal Material	-P
	0010=0.1 µm	HSF=226 /Fin (PBT Insert)	05=5"	S=Silicone	
	0020=0.2 µm	HSC=226 /Flat (PBT Insert)	10=10"	E=EPDM	
	0045=0.45 µm	HTF=222 /Fin (PBT Insert)	20=20"	V=Viton	
	0080=0.8 µm	HTC=222 /Flat (PBT Insert)	30=30"		
	0100=1.0 µm	DOE=Double Open End	40=40"		
	0300=3.0 µm				
	0500=5.0 µm				

Hall Pyke



www.hallpyke.ie

Head Office, 3A Sunbury Industrial Estate, Ballymount Road, Walkinstown, Dublin 12.
T. +353-1-4501411 F. +353-1-4507960 E. info@hallpyke.ie W. www.hallpyke.ie