

# Hall Pyke



**Depth Pre Filtration**

**MultiPoly**

**The SMART choice for filtration**

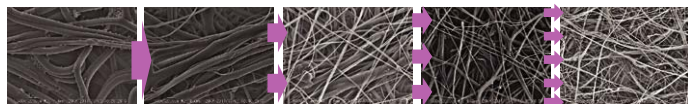
# MultiPoly® Filter Cartridges

Multi-layer Pleated Polypropylene Media · Pre-filter for Liquids

**MultiPoly®** Filter Cartridges are composed entirely of pleated polypropylene. Characteristics of the depth filter design include graded pore size and high dirt holding capacity which eliminates high viscosity contaminants (including gels and agglomerates) and avoids filter surface jams. The graded pore size distribution from coarse (upstream) to fine (downstream) removes particles gradually and extends the filter's service life making it especially suited for high suspended particulates, colloids, and viscous liquids.

## Features and Benefits

- 5 to 7 layers of PP media with a graded pore size distribution enables additional particle loading and high dirt holding capacity



- Multi-layer nano fiber media provides excellent removal of contaminants including gels and agglomerates
- Polypropylene construction yields excellent chemical compatibility

## Quality Standards

- Designed, developed and manufactured in compliance with ISO9001
- Full Regulatory Compliance with the following:
  - 21CFR.210.3(b)(5)(6), 211.72 for Non-Fiber Release
  - Endotoxins: <0.25EU/ml/10inch filter
  - USP <88> Plastic Class VI-121°C
  - FDA 21 CFR177-182 & EU 1935/2004/EC



## Typical Applications

- Culture Medium
- Fermentation Broths
- Gel Materials
- High Viscosity Materials
- Serums

Sterile Filtration

Bio-burden Reduction

Pre-Filtration

All-Fluorine Filters

Capsule Filters



## Materials of Construction

<b>Filter Media</b>	Multi-Layer Nano Fiber Polypropylene
<b>Support</b>	Polypropylene
<b>Core/Cage/End Caps</b>	Polypropylene

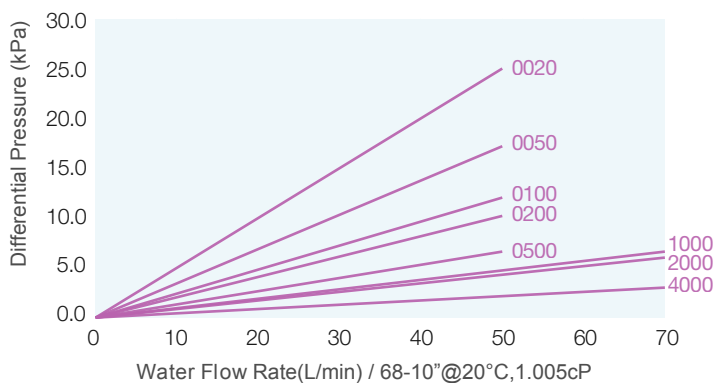
## Operating Conditions

<b>Max. Temperature</b>	80°C
<b>Max. Differential Pressure</b>	4.0 bar / 21°C 2.4 bar / 80°C
<b>Effective Filtration Area</b>	0.26-0.29m <sup>2</sup> / Φ 69-10 inch-Layer

## Sterilization

<b>Inline Steam Sterilization</b>	up to 20 cycles (125°C for 30min@30kPa per cycle)
-----------------------------------	---

## Flow Rate Characteristics



## Ordering Information

<b>PFSA2</b>	<b>Removal Ratings</b>	<b>End Cap</b>	<b>Nominal Length</b>	<b>Seal Material</b>	<b>-P</b>
	0020=0.2µm	HSF=226 /Fin (PBT Insert)	05= 5"	S=Silicone	
	0050=0.5µm	HSC=226 /Flat (PBT Insert)	10=10"	E=EPDM	
	0060=0.6µm	HTF=222 /Fin (PBT Insert)	20=20"	V=Viton	
	0080=0.8µm	HTC=222 /Flat (PBT Insert)	30=30"		
	0100=1.0µm	DOE=Double Open End	40=40"		
	0150=1.5µm				
	0200=2.0µm				
	0500=5.0µm				
	1000=10µm				
	1500=15µm				
	2000=20µm				
	4000=40µm				
	7000=70µm				
	9000=90µm				
	15000=150µm				

# Hall Pyke



[www.hallpyke.ie](http://www.hallpyke.ie)

Head Office, 3A Sunbury Industrial Estate, Ballymount Road, Walkinstown, Dublin 12.  
T. +353-1-4501411 F. +353-1-4507960 E. [info@hallpyke.ie](mailto:info@hallpyke.ie) W. [www.hallpyke.ie](http://www.hallpyke.ie)